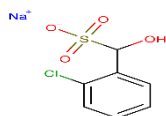


# SYNTRON

---

## Technical Data Sheet

<b>Product Name</b>	<b>CHEMTRON - CBSBS</b>
<b>Product code</b>	<b>CMT-1003</b>
<b>Chemical Description</b>	<b>Sodium (2-Chlorophenyl) Hydroxy Methane sulfonate</b>
<b>Synonyms:</b>	Benzene methanesulfonic acid, 2-chloro-alpha-hydroxy-, monosodium salt
<b>CAS No.</b>	<b>68391-33-3</b>
<b>Structure</b>	



**Applications** **CHEMTRON - CBSBS used** as a brightener in acid zinc electroplating and also used as an intermediate in manufacturing of various chemicals including dyes, metal finishing product as well as in organic synthesis, Agrochemical pesticide.  
The adduct formed when 2-Chlorobenzaldehyde react with sodium bisulfite, retain same of reducing properties of the bisulfite

<b>Chemical Properties</b>	Appearance	Crystal
	Color	White
	Solid Content	95 %.
	Solubility in Water	No data available
	pH 1.0 % aq. Soln.	No data available
	Melting point	No data available
	Boiling point	No data available
	Flash point	No data available
	Sensitive	Hygroscopic

These values indicate typical specification, they are not intended to be used as product specifications.

**Storage & Handling** Normally safety precautions (i.e gloves & safety goggles) should be employed when handling **CHEMTRON - CBSBS** Contact with the eyes and prolonged contact with the skin should be avoided. It is recommended that **CHEMTRON - CBSBS** be stored in sealed HDPE Bag and kept in a cool, dry place. Store away from oxidizing agent and acid

**Work place Exposure** Occupational exposure can occur primarily through skin contact or via inhalation of vapour and mist. Engineering controls, personal protective equipment and other work place practices should be used to control these exposures

**Note** It is the responsibility of the formulator to review the chemical control regulations where the end product is intended to be sold or used.

**Additional Safety Information** Details available in Material Safety Data Sheet

**Important:** The information presented herein, while not guaranteed, was prepared by technical person and is true and accurate to the best of our knowledge. No warranty or guarantee, express or implied, is made regarding performance, stability or otherwise. This information is not intended to be all inclusive as the manner and conditions of use, handling, storage and other factors may involve other or additional safety or performance consideration